

Ya No Eres

Voice

Piano

Chords: Eb, Ab, Eb, Ab, Eb, Ab, Eb, Ab/Eb

5

Ma e-res pan y vi - no, — ahor-a que eres cuer - poy sang - re, — vi - ves en

Chords: Eb, Ab, Eb, Eb, Eb

9

mí de ro - dil-las yo cai-go al con-tem - plar tu bon-dad,

Chords: Bb, Bb, Ab, Eb

13

co-mo no te voy a a - dorar Mien - tras te pier-des en mis la - bios, tu

13 $A\flat$ $B\flat$ $E\flat$ $A\flat$ $E\flat$

17

gra-ci-a va in - un-dan - do to - do mi cor-a - zón pore-sa

17 $E\flat$ $E\flat$ $B\flat$ D $B\flat$ D

21

paz que me lle - na de a - leg-ría mi ser co - mo no te voy a ador - er

21 $A\flat$ $E\flat$ $A\flat M7$

24

Señ-or Je-sús, mi sal - va-dor, a-mor e-tern-

24 B \flat B \flat E \flat B \flat

28

o, a - mor di-vin - o ya no fal - ta na - da, lo ten - go to -

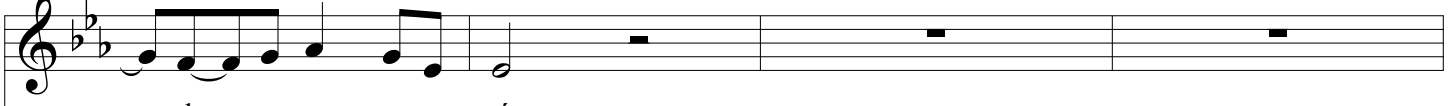
28 C m A \flat E \flat A \flat E \flat

32

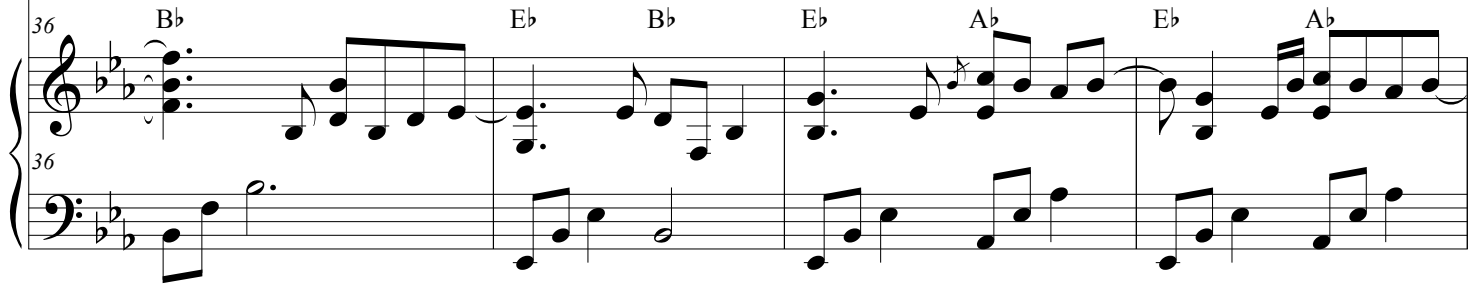
- do, te ten - go a tí (bis) ya no fal - ta na - da, lo ten - go to -

32 B \flat E \flat A \flat E \flat

36



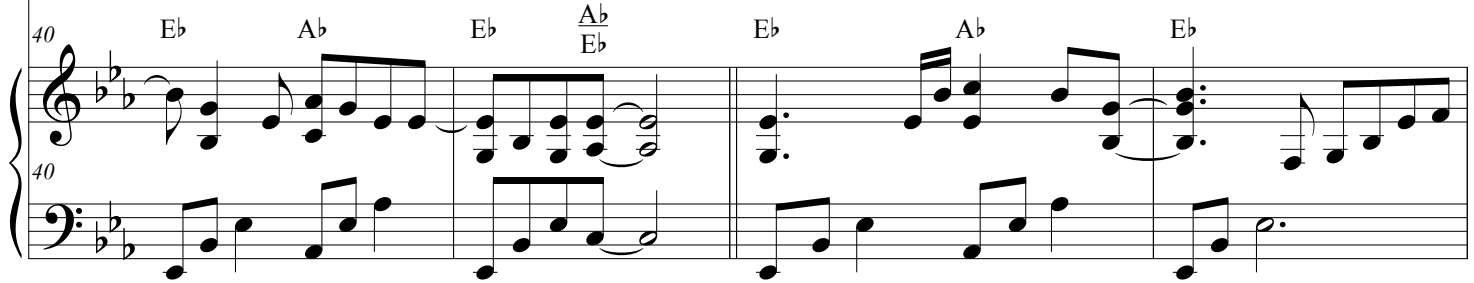
- do, te ten - go a tí



40



Due-ño y Rey del u - ni - vers - o

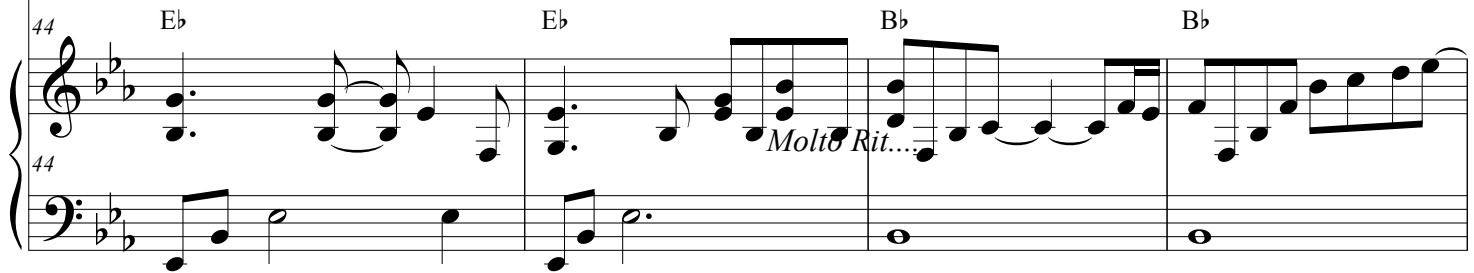


44



co - mo pue - de ser pos - i - ble que bus - ques mi amor

Tú tan



48

grand-e y yo pe-que-ño y te fi-jas en mi co-mo no te voy a a -

48 Ab Eb Ab

51

dorar De rod-il-las yo te pi - do que el dí-a cu - an-do tu me

51 Bb Eb Ab Eb Eb

55

lla-mes sea co - mo hoy para mir - ar - te a los ojos y po -

55 Eb Bb/D Bb/D Ab

59

der-te de-cir___ que co-mo no te voy a a-dorar___ Señ-or Jes-ús,

59 Eb AbM7 Bb Bb

63

mi sal - va-dor,___ a-mor e-ter - no, amor di-vi - no___

63 Eb Bb Cm Ab Eb

67

ya no fal-ta na-da,___ lo___ ten-go to-do,___ te___ ten-go a tí (bis)

67 Ab Eb Bb/D Cm

71

ya no fal-ta na-da, lo ten-go to-do, te ten-go a tí

71 $A\flat$ $E\flat$ $B\flat$ $A\flat$

71

Detailed description: This block contains the first system of a musical score, measures 71 through 74. It features a vocal line in a treble clef with a key signature of two flats (B-flat and E-flat). The lyrics are: "ya no fal-ta na-da, lo ten-go to-do, te ten-go a tí". Below the vocal line is a piano accompaniment consisting of two staves (treble and bass clefs). The piano part includes chord markings: $A\flat$ above the first measure, $E\flat$ above the second measure, $B\flat$ above the third measure, and $A\flat$ above the fourth measure. The piano part uses various rhythmic patterns, including eighth and sixteenth notes, and rests.

75

te ten - go a tí

75 $A\flat$ $E\flat$ $E\flat$

75

Detailed description: This block contains the second system of a musical score, measures 75 through 78. It features a vocal line in a treble clef with a key signature of two flats. The lyrics are: "te ten - go a tí". Below the vocal line is a piano accompaniment consisting of two staves (treble and bass clefs). The piano part includes chord markings: $A\flat$ above the first measure, $E\flat$ above the second measure, and $E\flat$ above the third measure. The piano part uses various rhythmic patterns, including eighth and sixteenth notes, and rests.