

Vista Hymn

Piano

F Gm7/F FM7 Bb/F F Gm7/F FM7 Bb/F

5

5

Thanks and praise to God our Fath - er, And to Christ His

F Gm7/F FM7 Bb/F F Gm7/F

9

Son, our Lord, Thanks to God, the Hol - y - Spir - it,

FM7 $\frac{B\flat}{F}$ B \flat $\frac{C}{B\flat}$ B \flat $\frac{C}{B\flat}$

14

Praise the Lord God, Three - in - One; Al - le - lu - ia,

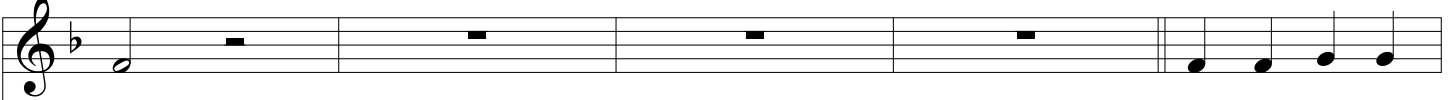
B \flat $\frac{C}{B\flat}$ B \flat Csus C Am Dm7

18

God Most High, all who know your love now cry, Al - le - lu - - -

Gm F E \flat Cm Gm7 $\frac{F}{A}$ $\frac{G}{B}$ $\frac{G7}{B}$ C B \flat $\frac{F}{A}$ Gm $\frac{Gm}{C}$

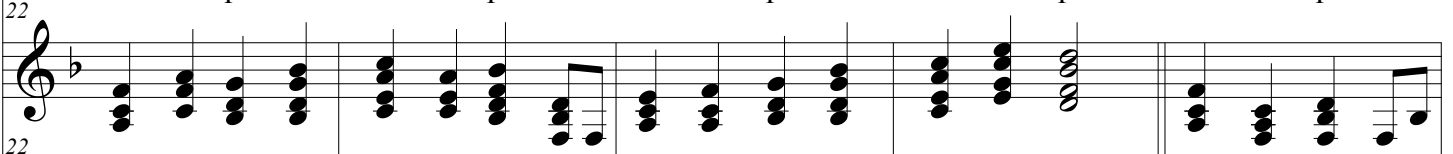
22



ia.

Saints and mar - tyrs

F Gm7/F FM7 Bb/F F Gm7/F FM7 Bb/F F Bb/F

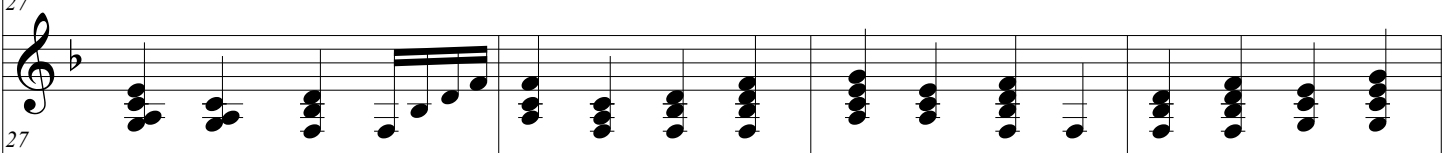


27



round your throne, Sing glor - y ho - nor, praise to you, Your cre - a - tion

FM7 Bb/F F Bb/F FM7 Bb/F Bb C/Bb

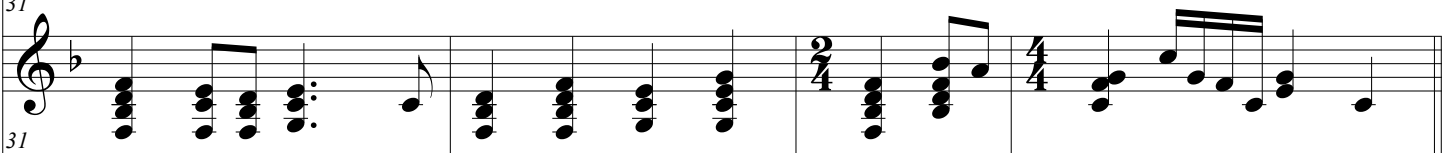


31



on the earth, With hearts freed give our God His due;

Bb C/Bb Bb C/Bb Bb Csus C



35

Musical staff for vocal line, measures 35-38. The melody consists of quarter and eighth notes in a B-flat major key signature.

Al - le - lu - ia, King of Kings, All your hol - y Church now brings,

Am Dm7 Gm F Eb Cm Gm7 $\frac{F}{A}$ $\frac{G}{B}$ $\frac{G7}{B}$ C

Musical staff for piano accompaniment, measures 35-38. The right hand features chords and moving lines, while the left hand provides a steady bass accompaniment.

Musical staff for bass line, measures 35-38. The left hand plays a consistent eighth-note accompaniment.

39

Musical staff for vocal line, measures 39-42. The melody is mostly sustained notes with some movement.

Al - le - lu - - - - ia.

Bb $\frac{F}{A}$ Gm C F $\frac{Gm7}{F}$ FM7 $\frac{Bb}{F}$ F $\frac{Bb}{F}$

Musical staff for piano accompaniment, measures 39-42. The right hand features chords and moving lines, with a *rit...* marking at the end.

Musical staff for bass line, measures 39-42. The left hand plays a steady eighth-note accompaniment.

43

Musical staff for vocal line, measures 43-46. The melody consists of quarter notes.

One great peo - ple — marked with the sign, Of Christ, the love and

FM7 $\frac{Bb}{F}$ F $\frac{Gm7}{F}$ FM7 $\frac{Bb}{F}$ F $\frac{Gm7}{F}$

Slower

Musical staff for piano accompaniment, measures 43-46. The right hand features chords and moving lines, with a *Slower* marking.

Musical staff for bass line, measures 43-46. The left hand plays a steady eighth-note accompaniment.

47

life of God, Through Christ two hearts, God and man, Are re - con - ciled and

FM7 $\frac{B\flat}{F}$ B \flat $\frac{C}{B\flat}$ B \flat $\frac{C}{B\flat}$ B \flat $\frac{C}{B\flat}$

51

all is one. Al - le - lu - ia, King - dom come,

B \flat Csus C Am Dm7 Gm F E \flat

55

Stay with us, your vict - ory sung, Al - le - lui - - - a!

Cm Gm7 $\frac{F}{A}$ $\frac{G}{B}$ $\frac{G7}{B}$ C B \flat $\frac{F}{A}$ Gm $\frac{Gm}{C}$ F $\frac{Gm7}{C}$

59

A single staff of music in treble clef with a key signature of one flat. It contains a vocal line starting with a whole rest, followed by a quarter note G4, an eighth note F4, an eighth note E4, and a dotted quarter note D4.

Al - le - lui - a!

59

Chords: FM7, $\frac{B\flat}{F}$, F, $\frac{B\flat}{F}$, FM7, $\frac{B\flat}{F}$, F

The piano accompaniment consists of two staves. The right hand plays chords and moving lines, while the left hand plays a steady eighth-note bass line. The chords are: FM7, $\frac{B\flat}{F}$, F, $\frac{B\flat}{F}$, FM7, $\frac{B\flat}{F}$, and F.

59

rit...

The piano accompaniment continues with the same eighth-note bass line in the left hand. The right hand features a series of chords and a final sustained chord. The *rit...* marking is placed above the right hand staff.